



For Lease » Office Space

16 Beechwood Ave

Ottawa | Ontario



Building Details

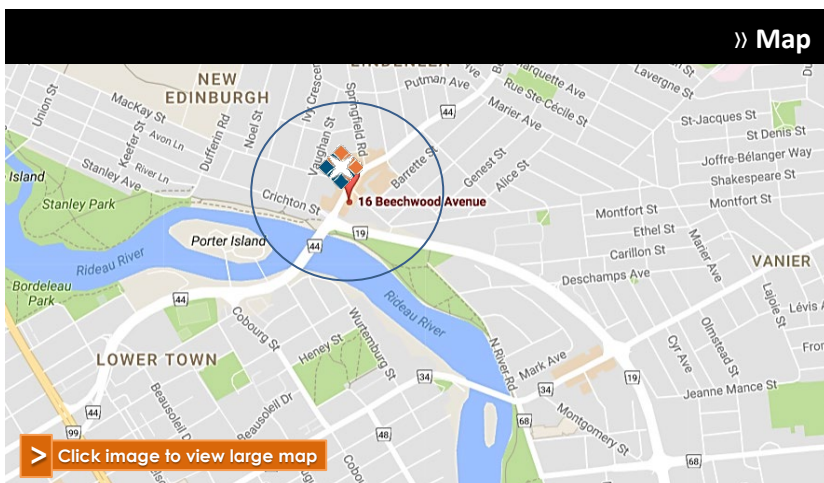
Building Size:	22,971 sf
Number of Floors:	3
Net Rent:	\$15.00
Operating Costs:	\$18.83

Space for Lease

Sq. ft.	Availability
854	Immediately

BUILDING KEY FEATURES + HIGHLIGHTS

- + Beautiful 3-storey brick building with copper roofing.
- + Multi use retail, office and residential apartment building.
- + Magnificent landscaping with patios and seating area.
- + Large showcase windows
- + Indoor parking and storage available
- + At the corner of Beechwood Ave and Charlevoix Ave
- + Minutes to downtown
- + Access to HWY 417 via Vanier Parkway
- + Within a block to Rideau River/bike/walking paths
- + Situated in trendy New Edinburgh village
- + Adjacent to many other shops and restaurants



> Click image to view large map

For More Information Contact

451 Daly Ave., 2nd Floor
Ottawa, Ontario K1N 6H6
www.elkproperty.com

Karen Braye

Tel: 613-244-1012 ext: 200
Cell: 613-229-8723
kbraye@elkproperty.com



ELK
PROPERTY MANAGEMENT LIMITED



For Lease » Office Space

16 Beechwood Ave

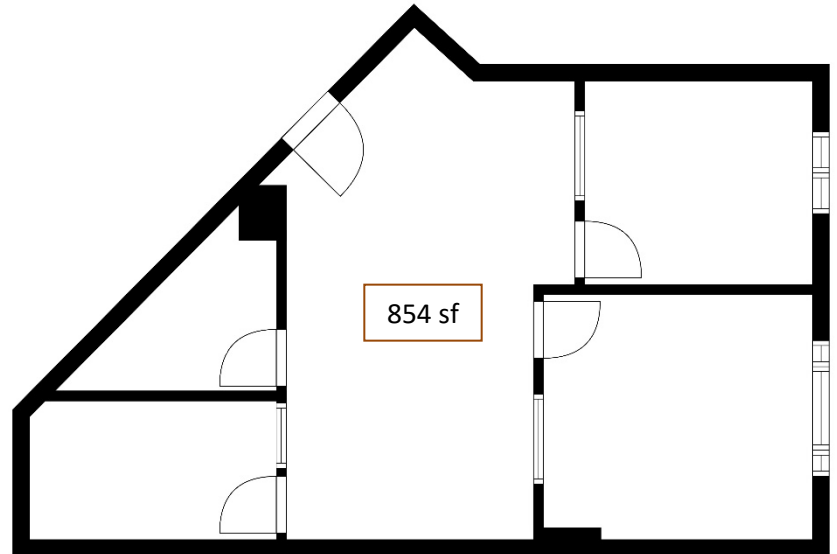
Ottawa, Ontario

» Nearby Amenities

metro



» Floor plan



» Additional Highlights

- + Reception Area
- + Private Offices
- + Utilities/Underground parking extra

» Pictures



For More Information Contact

451 Daly Ave., 2nd Floor
Ottawa, Ontario K1N 6H6
www.elkproperty.com

Karen Braye Tel: 613-244-1012 ext: 200
Cell: 613-229-8723
kbraye@elkproperty.com



ELK
PROPERTY MANAGEMENT LIMITED